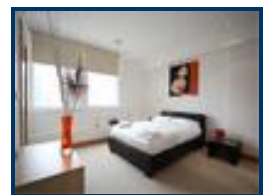


# Exemplar | Project | Solutions

## Tower Building, Liverpool



**Client:** Pierse Group

**Scheme Description:** Extensive refurbishment and conversion of Grade II listed building to provide 5 floors of residential units, 2 floors of commercial space and 1 floor of retail plus 2 levels of basement car parking

**Project Value:** £22m

**Project Team:**

- **Architect:** Brock Carmichael
- **Structural Engineer:** Nickson Davis
- **Employer's Agent:** Redhouse
- **Contractor:** Pierse Contracting Ltd

**Exemplar Project's Role:** Development Manager with responsibility for co-ordinating the activities of the design, legal and contracting teams during the post completion phase of the project. Co-ordination of tenants fit out activities. Co-ordination of Managing Agent and building maintenance activities. Co-ordination of various upgrade schemes for reception area, penthouse and common parts

**Main Project Challenge:**

- Improving standard of development finish to meet changing market conditions within strict financial constraints